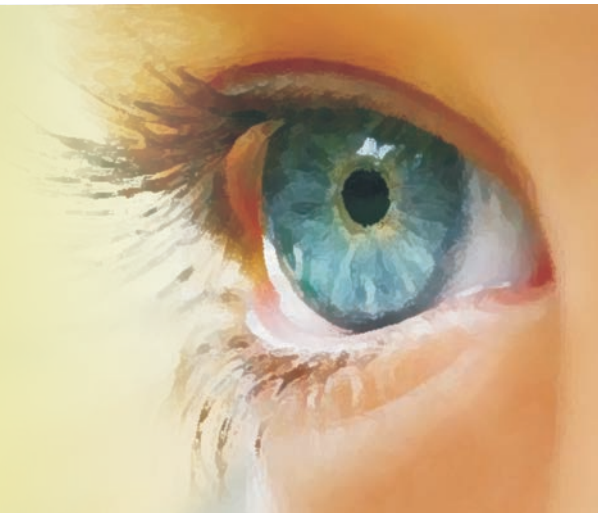


DESIGNED TO PERFORM beyond THE ORDINARY!



# GenNext

Aspheric Foldable Lens

## **Nature's Own Light Filter**

GenNext Aspheric Foldable IOL is made from Natural Yellow material having a special monomer containing the identical chromophore present in the human crystalline lens. Natural Yellow is the first IOL material to incorporate the same UV-A blocking and violet light filtering chromophore that is in the human crystalline lens. The approach, to UV blockers and violet filters is to use nature's own solutions to the problem of protecting the retina from harmful energetic light. This proprietary natural light filtering material is named as "Natural Yellow".

**GenNext Aspheric Foldable IOL with Natural Yellow** is superior to other yellow IOL available in the market because it protects the retina without blocking needed blue light. Blue blocking IOL reduces low light contrast sensitivity as well as color perception. These capabilities are critically needed for optimum vision, particularly at night. GenNext Aspheric Foldable IOL with Natural Yellow achieves complete natural protection without loss of contrast sensitivity or color perception. The human retina has already specified the exact chromophore it needs for the protection from energetic light through millions of years evolution and that is exactly the chromophore we deliver to our customers, in GenNext Natural Yellow IOL.

### ZERO TECHNOLOGY ULTRA PURE MONOMER

GenNext Foldable lens is produced from a raw material that is so pure that the methacrylic acid content is difficult to even measure. Zero ionicity IOL provides a further degree of Quality Assurance by eliminating the possibility of Calcium phosphate particles appearing over the time in the ordinary polymer matrix



### TECHNICAL SPECIFICATIONS :

<p style="writing-mode: vertical-rl; transform: rotate(180deg);"><b>360° Square Edge</b></p>	<b>Lens Model</b>	<b>YSQ FL600ASP</b>
	<b>Optic Design</b>	<b>Aspheric/Double Square Edge / Biconvex</b>
	<b>Optic Diameter</b>	6.0 mm
	<b>Overall Length</b>	12.5 mm
	<b>Haptic Angle</b>	0°, Elastic band design
	<b>A-Constant</b>	118.2
	<b>Diopter Range</b>	8 to 30 <sub>(in 0.5 increment in D+ 18 to 25)</sub>
	<b>Water Content</b>	25% <b>BENZ</b>

### Features:

- Aberration correcting aspheric foldable lens.
- Natural Yellow- protect retina without blocking needed blue light.
- Innovative double edge lens, minimize the chance of PCO.
- Elastic band design of haptics assured postoperative stability.
- Improved contrast sensitivity, preserving depth of field.

**Recommended Delivery Systems:** Our Aquaject plus for implanting GenNext Aspheric Foldable IOL.



REGD. OFFICE :  
**OMNI LENS PVT. LTD.**  
5, "SAMRUDDHI", Opp. Sakar-III,  
Navrangpura, Ahmedabad - 380 014. (INDIA)  
Phone : +91-79-27544031-32-33-34 Fax : +91-79-27544035  
E-mail : info@omnilens.in, info@bgpgroup.com  
Website : www.omnilens.in



An ISO 9001 & 13485  
Certified Company